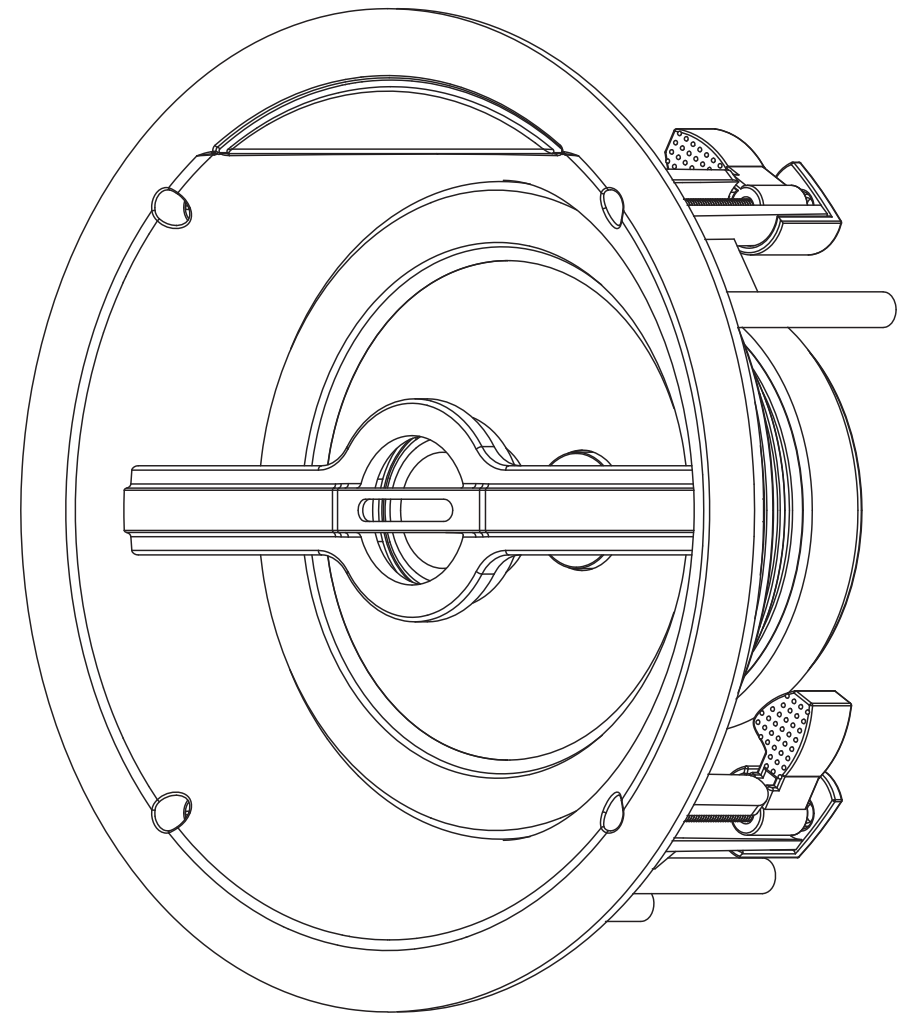


IN-CEILING SPEAKER



www.avteck.ca

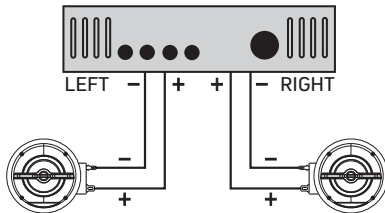


S-MCX65F

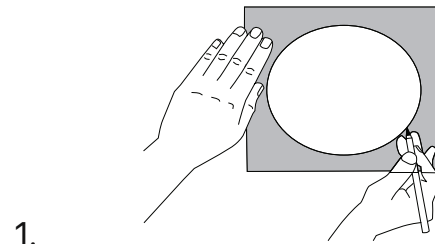
Specifications

Model	S-MCX65F
Woofer	6.5" Kevlar Woven Cone
Tweeter	1" Silk Dome
Max Power	120 watt
Nominal Impedance(ohm)	8
Sensitivity	89dB
Frequency Response(±3db)	60Hz-20kHz
Product Dimensions(mm)	234x107(9.2"x4.2")
Cut out Size(mm)	210(8.3")

2-CHANNEL AMPLIFIER WITH 8Ω OUTPUT

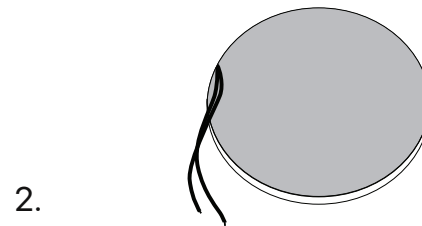


Observe Correct Polarity for Maximum Performance

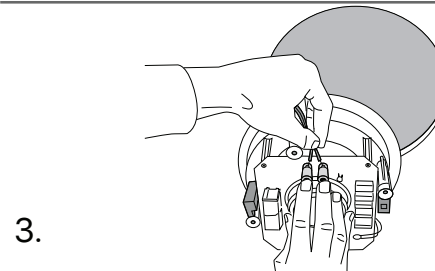


Use the enclosed installation template to illustrate the preference for the placement of the speaker as well as a guide when cutting the designated area.

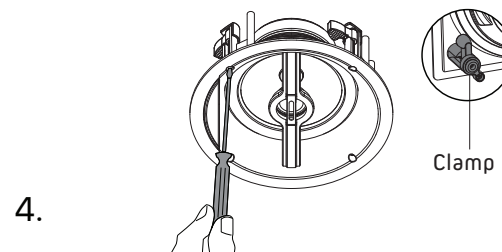
The outer edge indicates the size of the speaker and is where you will want to cut. Once you have finalized the placement of the speaker and have ensured that no ceiling obstructions exist, proceed with cutting the hole.



Now hollow out an appropriate installation opening in the ceiling for the speaker and guide the wiring into place. When running loudspeaker cable from an amplifier/receiver to the installation point be sure that the cable ends about 1 1/2 feet beyond the ceiling cutout.

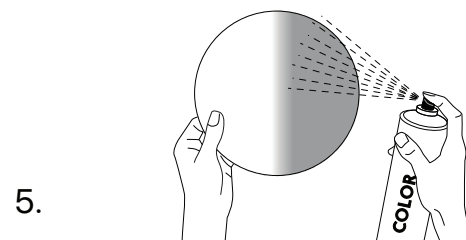


Connect the speaker cable to the speaker binding posts, which ensures that the polarity of the wiring is correct from the amplifier/source to the speaker



Place the speaker into the installation hole and tighten the screws to ensure that the speaker is fixed into the hole by the black mounting tabs.

Important:
To prevent damage to the screws or the mounting tabs, do not over tighten the screw. In addition, use a manual screwdriver instead of an electric screwdriver.



Painting

The grille of the speakers can be spray-painted to match its environment. Ensure that only the grille is removed before applying a coat of paint. In addition, ensure that the grille is prepared appropriately for painting (remove prior coatings, wipe the grille clean and etc.) and that the coating is not applied manually by a brush or a roller.