



Available in:



White



Grey

**16:9 Electric Matte Motorized
Projector Screen + Remote.**

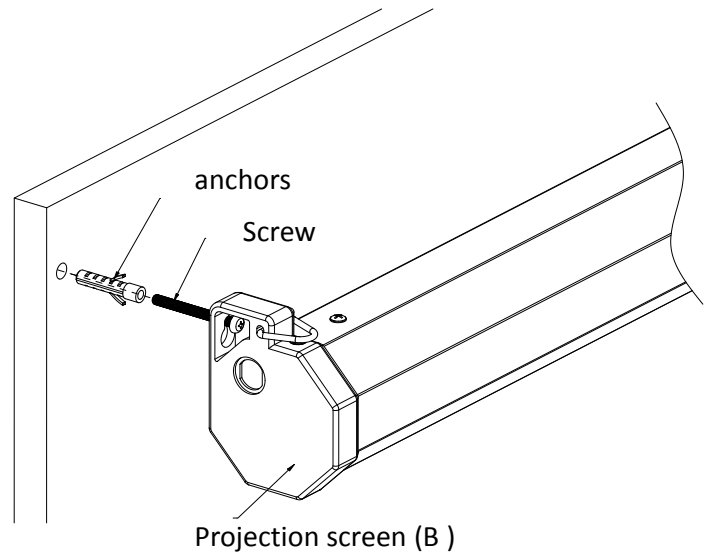
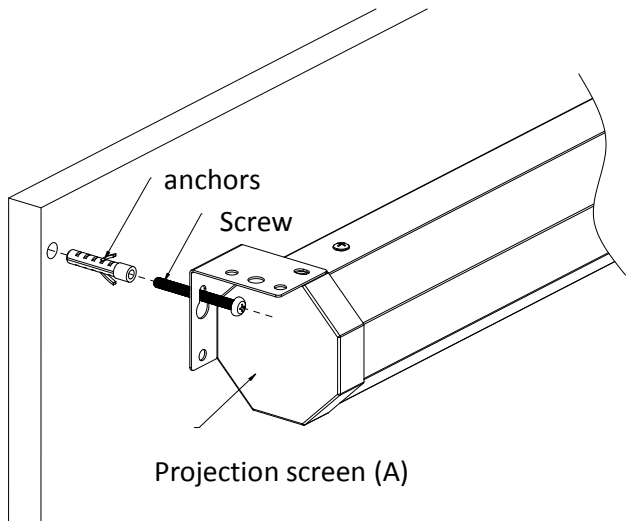
Thank you for choosing our TEXONIC screens. All the screens have passed strict quality inspections before delivery. Read this manual carefully to ensure proper usage.

Attention : the installation of the screen is important, the electrical connections, setting of the limit switches, must be conducted by skilled engineers only.*

Installation Method

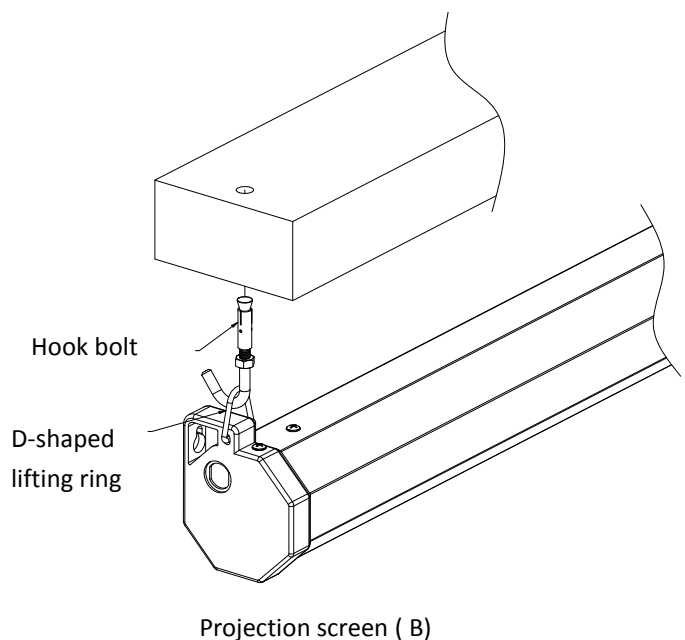
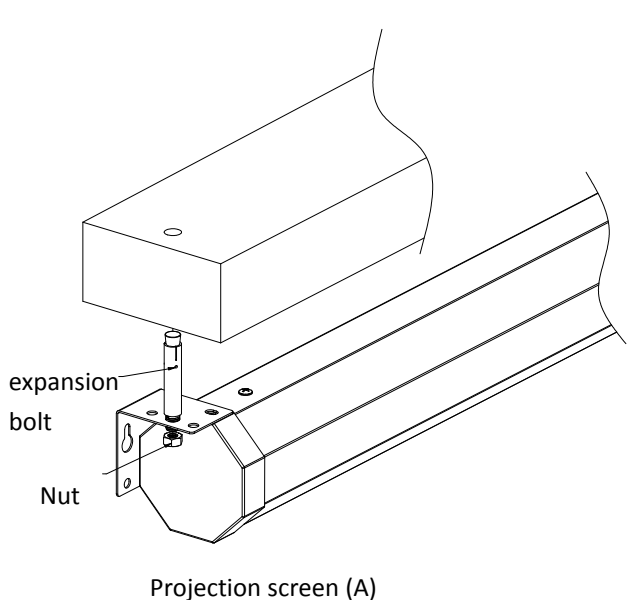
1. Wall mounted installation

Put the screw through the hanging hole of the end cover (hole like key type)

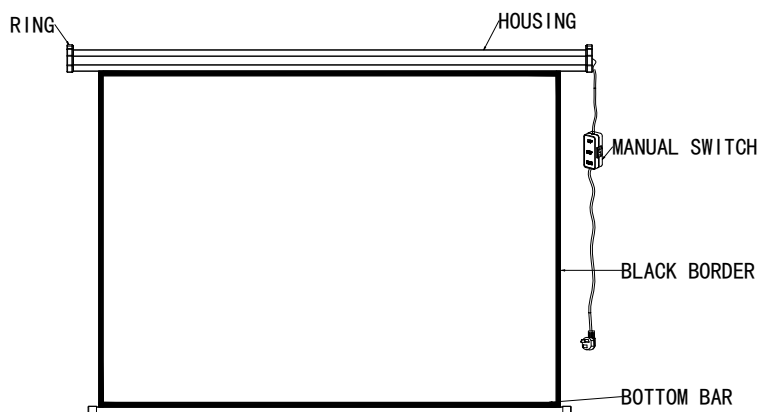


2. Ceiling installation

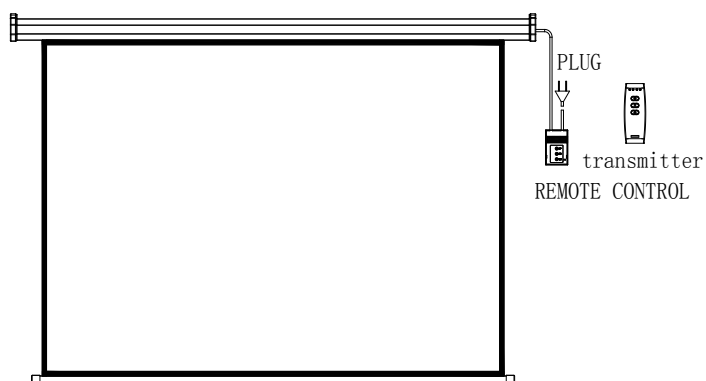
- 1) Projection screen (type A): Install the expansion bolt on the ceiling, and let the other end of the expansion bolt pass through the middle hole above the end cover, and lock the nut.
- 2) Projection screen (type B): Hang the "D"-shaped lifting ring on the hook bolt installed on the ceiling



MOTORIZED SCREEN



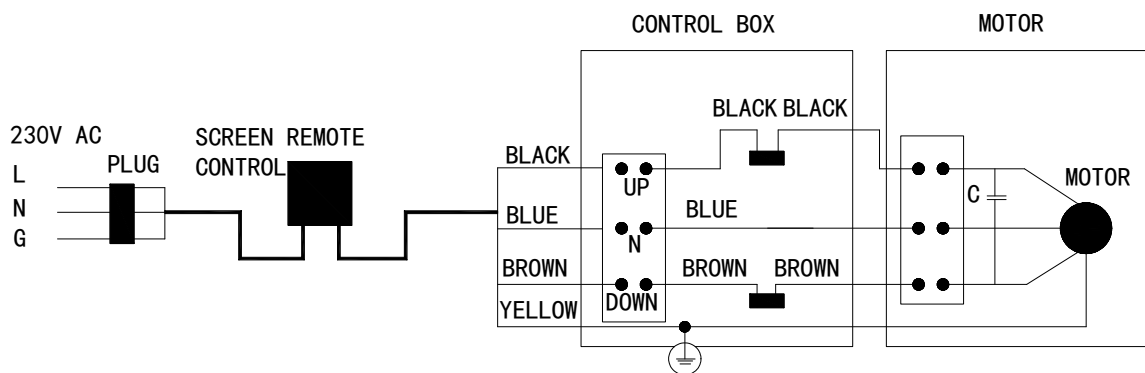
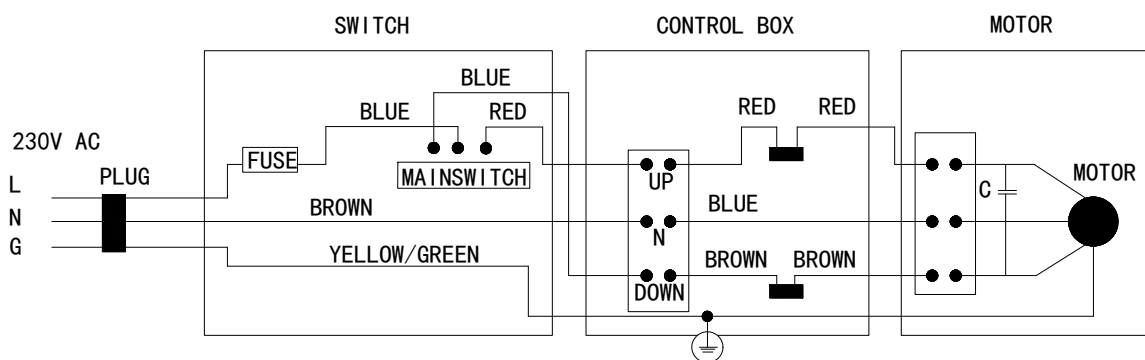
Motorized screen with manual switch



Motorized screen with remote control

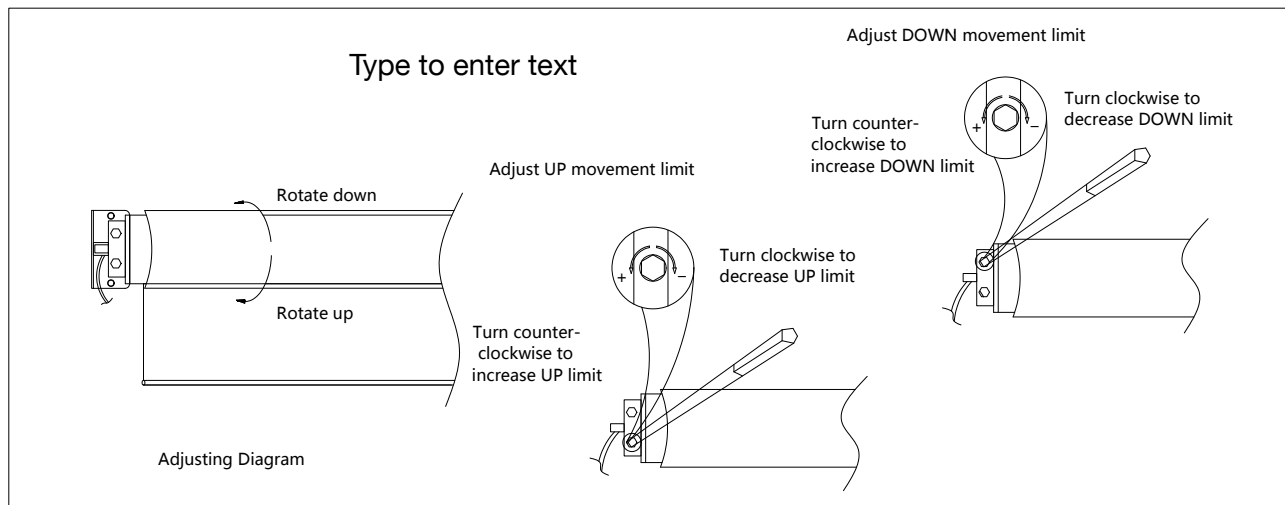
CIRCUIT DIAGRAMS

If the motorized screen work with manual switch, please refer to the diagram below for electric connection.



**If the remote control doesn't work well, please check the battery and replace it.

ADJUSTING DIAGRAM



USEFUL INSTRUCTIONS

- The screen should be switched to a suitable power supply. It can be 220V/50Hz, 230V/50Hz or 110V/60Hz, 120V/60Hz, but the motor's power must be same as the local voltage and frequency.
- The screen can be used with or without the remote controller. The remote control system can be radio type or infrared type. Normally if a remote control system is needed, a radio remote controller is supplied but an infrared type controller is also available for a special requirement. These two different controlling functions cannot be combined in one control system.
- Normally a synchronized motor is installed inside the housing but a tubular motor is also available for a special requirement.
- If the remote control system is not accompanied, the screen can be operated by the control box directly, Just push the UP/DOWN/STOP button on the control box to operate the screen. Alternatively the screen can be operated by the remote controller.
- The screen will automatically stop when the screen fabric goes fully back up into the housing or when the top black border comes out totally. The screen can also stop at any position which you want.